



  
DUDSON

# Why Dudson?

- A longstanding and prestigious brand with over 200 years of heritage
  - Exclusively hospitality
  - Expert craft potters (clays and raw materials knowledge and development)
  - Industrial toughness
  - Reputation for inspirational design and stylish product
  - Global brand with developed distribution
- 



THE  
**maker's**  
COLLECTION

# Finca

A Creative Heritage

Finca is a multi-tonal print that mimics the worn textures of rustic interiors and architectural designs.





Finca Sandstone



Finca Flint

## Finca

Crafted and creative, Finca is finished in a semi-matte, hand dipped glaze, enhancing the character of the collection and leaving original 'makers marks' on the reverse of each piece. Decorated in-glaze for industrial toughness, The Maker's Collection is designed for professional use.



Finca Limestone & Sandstone

THE  
**maker's**  
COLLECTION

# Porto

Portuguese Craftsmanship

The Maker's Collection Porto is inspired by the historical, hand-painted tiles featured within Portuguese architecture.

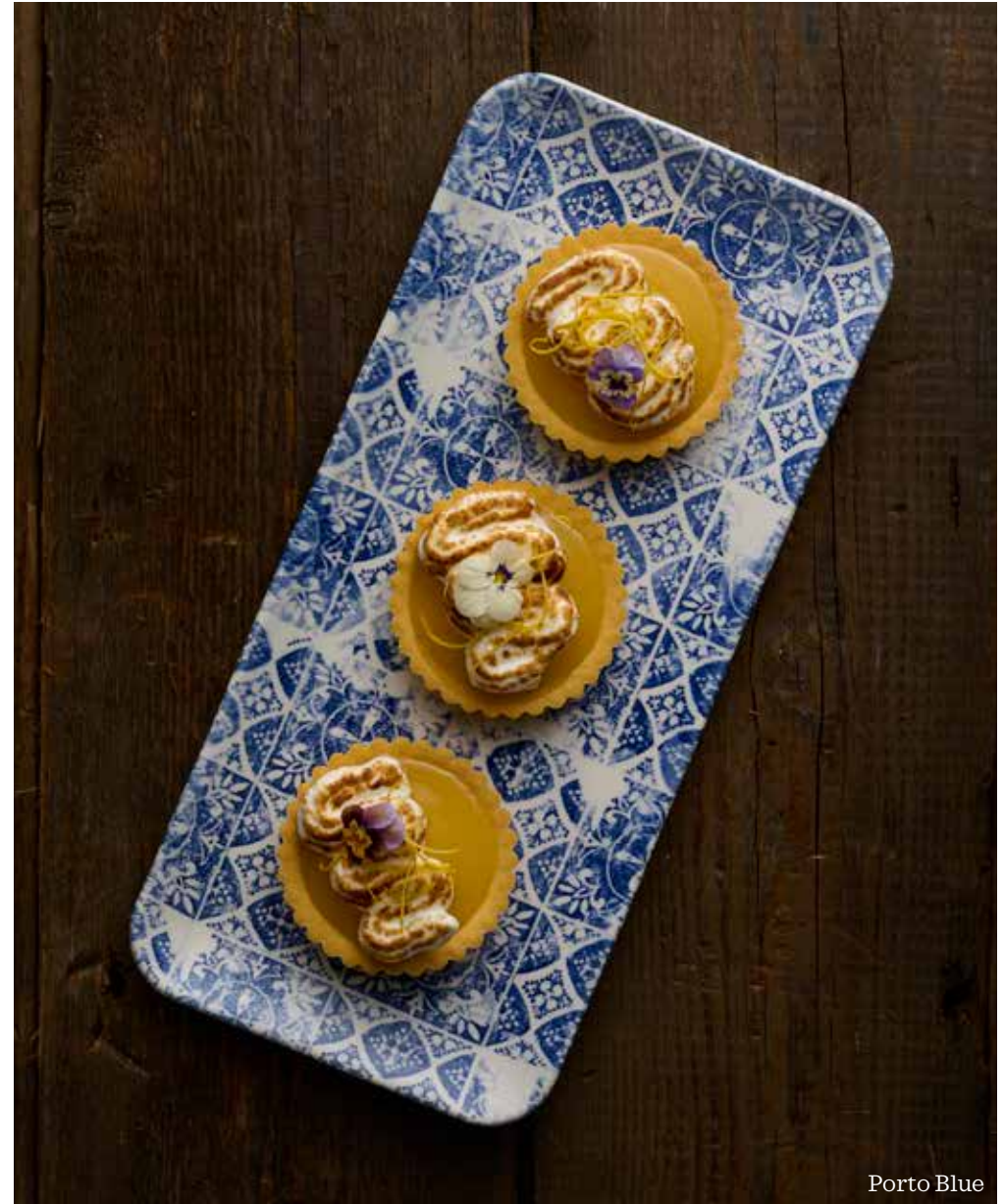


# Porto

Distinctive and decorative, Porto resembles a mosaic design, capturing the essence of hand-crafted and artisan Portuguese azulejos. Decorated under-glaze for industrial toughness, Porto is designed for professional use.



Porto Blue



Porto Blue



Porto Blue, Harvest Plum & Norse White

THE  
**maker's**  
COLLECTION

# Jute

Hand-woven Crafted Technique

The Maker's Collection Jute is inspired by the crafted technique of hand-weaving natural fabrics featured within today's interior decor.



  
**DUDSON**



Jute Grey



Jute Grey

## Jute

The design mimics the organic and detailed texture of Jute material, first crafted in India from sustainable plant fibre. Decorated in-glaze for industrial toughness, Jute is designed for professional use.



Jute Grey, Porto Blue & Norse White



THE  
**maker's**  
COLLECTION

# Urban

Industrial & Man-made Texture

The Maker's Collection Urban, a  
burnished effect inspired by the  
industrial history of UK made ceramics.

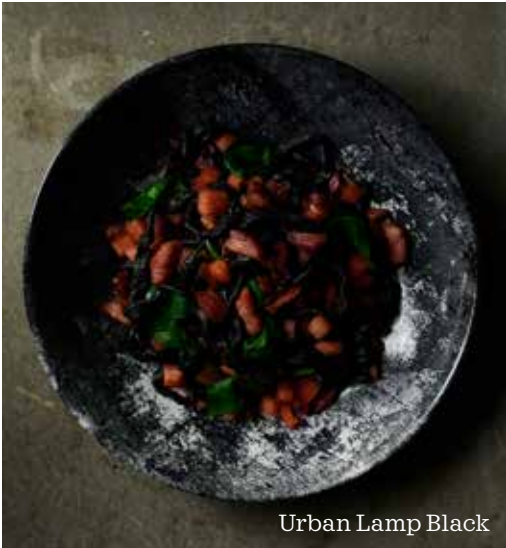


  
**DUDSON**

# Urban

Urban mimics the worn, man-made textures of industrial landscapes. Decorated under a semi-matte glaze for toughness, Urban is designed for professional use.

Available in Steel Grey and Lamp Black, the Urban colour palette is in keeping with the raw luxury of contemporary interior design.



Urban Lamp Black



Urban Lamp Black & Steel Grey



Urban Lamp Black & Steel Grey

# Harvest

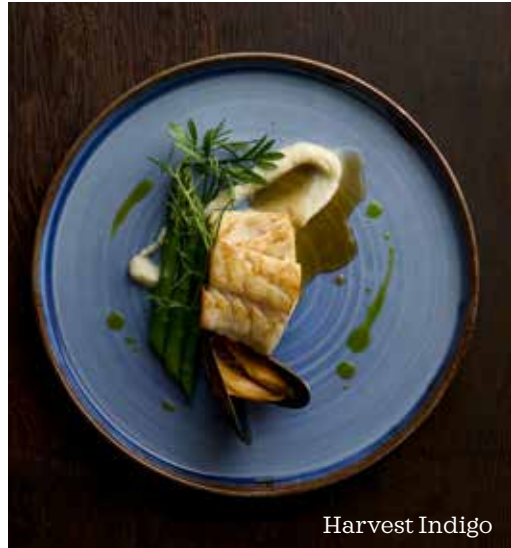
Handcrafted and authentic

Harvest's genuine hand finished pieces reflect the 'farm-to-table' philosophy so popular in today's dining out culture.





Harvest



Harvest Indigo

## Harvest

Harvest's genuine hand finished pieces reflect the 'farm-to-table' philosophy so popular in today's dining out culture.

Every piece is individually glazed by hand leaving an original 'makers mark' on the reverse, highlighting the handcrafted nature.



Harvest Ink and Turquoise

# Harvest Mediterranean

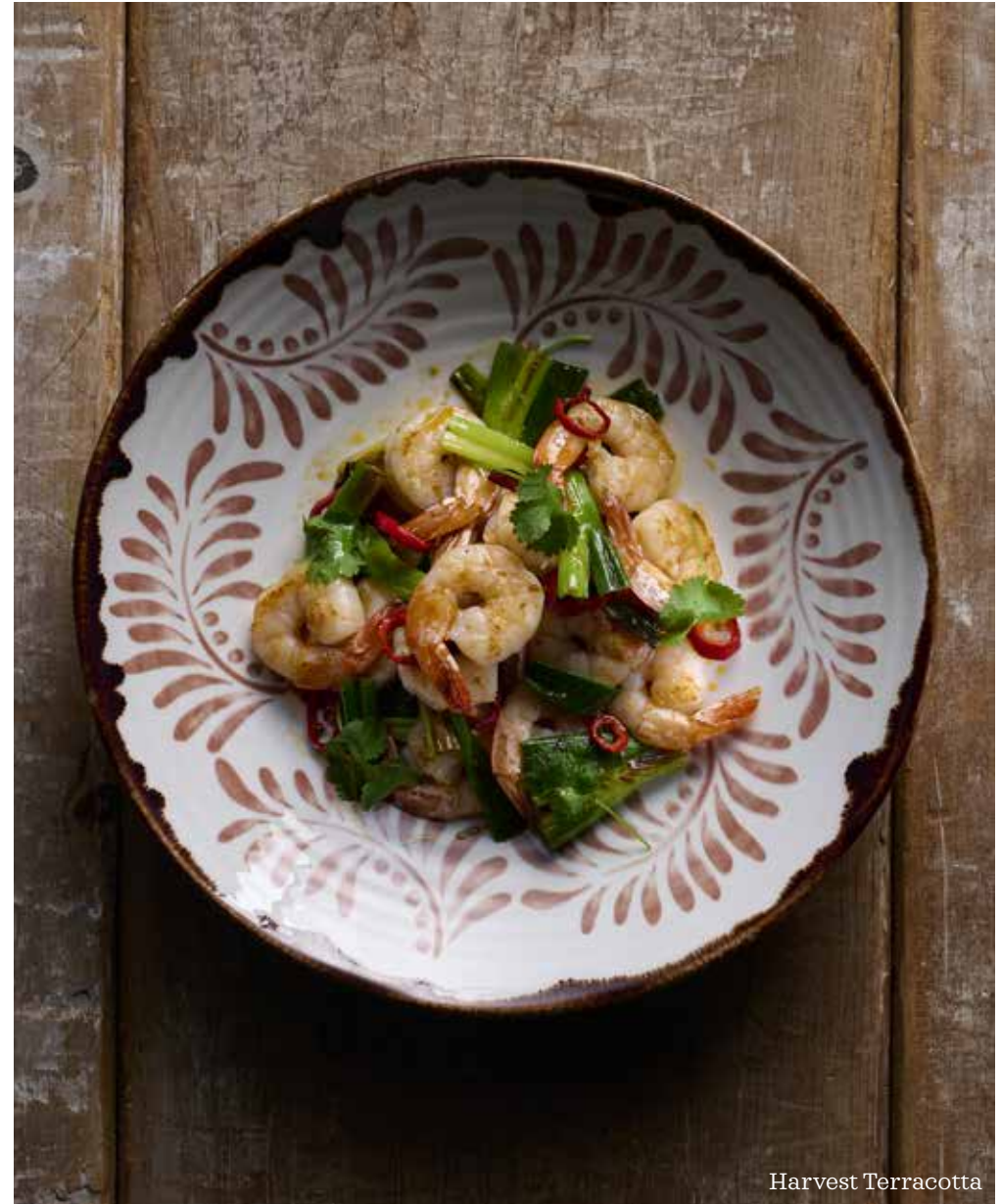


Rustic Coastal Charm

The Harvest Mediterranean design captures the charm of Southern Europe. It features three different patterns, perfect for creating an eclectic tabletop looks.

# Harvest Mediterranean

Harvest Mediterranean looks great mixed with other colours in the collection, such as the fresh Turquoise and Blue tones. Alternatively create a more rustic feel by combining Mediterranean with the warmer shades of Harvest Mustard and Brown.

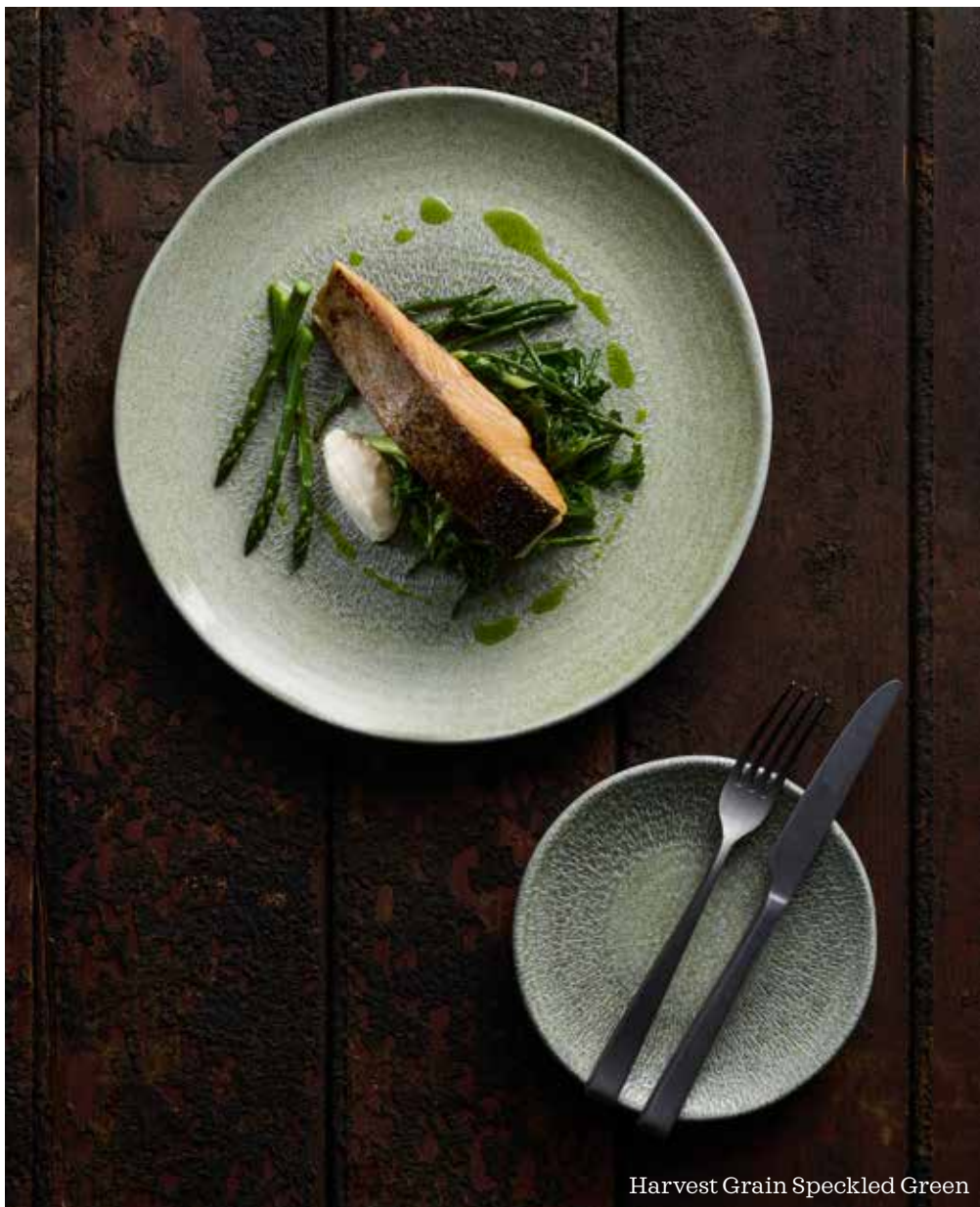


# Harvest Grain

Natural & Earthy Texture

Harvest Grain is a derivative of the original collection, featuring a speckled glaze that reflects the natural and earthy grains found in agricultural terrains





## Harvest Grain

Harvest Grain is a derivative of the original collection, featuring a speckled glaze that reflects the natural and earthy grains found in agricultural terrains, resonating the true farm-to-fork philosophy.

Decorated under-glaze for industrial toughness, Harvest Grain is finished in a hand-dipped speckled glaze.





# Harvest Flux

Flowing Border Effects

Taking inspiration from the original Harvest collection, Harvest Flux is inspired by flowing border glaze effects designed to create movement and visual texture.



## Harvest Flux

Every piece is individually glazed by hand, leaving the original 'makers mark' on the reverse. Capturing the essence of authentic crafted pottery, Harvest Flux is the perfect collection for all styles of casual, rustic dining.



# Harvest Norse

Simple Rusticity

Introducing Norse to the Harvest collection, a design based on the simple rusticity and functionality of Nordic craftsmanship.





Harvest Norse Grey & Linen



Harvest Norse White

## Harvest Norse

The minimal radial lines have the appearance of hand-carved marks and are enhanced by hand glazing to create the rustic look and feel of crafted pottery.

Decorated in-glaze for industrial toughness, The Maker's Collection is designed for professional use.



Harvest Norse Linen

# White

Crafted Shape Design

A collection of exclusive shapes, Dudson White is in keeping with the brand's heritage as expert craft potters. The designs feature a subtle irregular edge and hand-thrown embossment.



## White

Manufactured in Dudson's Finest Vitrified body, the collection has the industrial toughness to stand up to every day use in a professional kitchen.

The White collection features organic shapes in rounds and rectangles, including the iconic Wobbly bowl.



# Terrazzo

Decorative and Abstract

Terrazzo is inspired by the Italian decorative technique of combining fragments of marble and glass to create a speckled abstract pattern. Popular in the 1970's, the use of Terrazzo has made a comeback in the hospitality interiors of today.





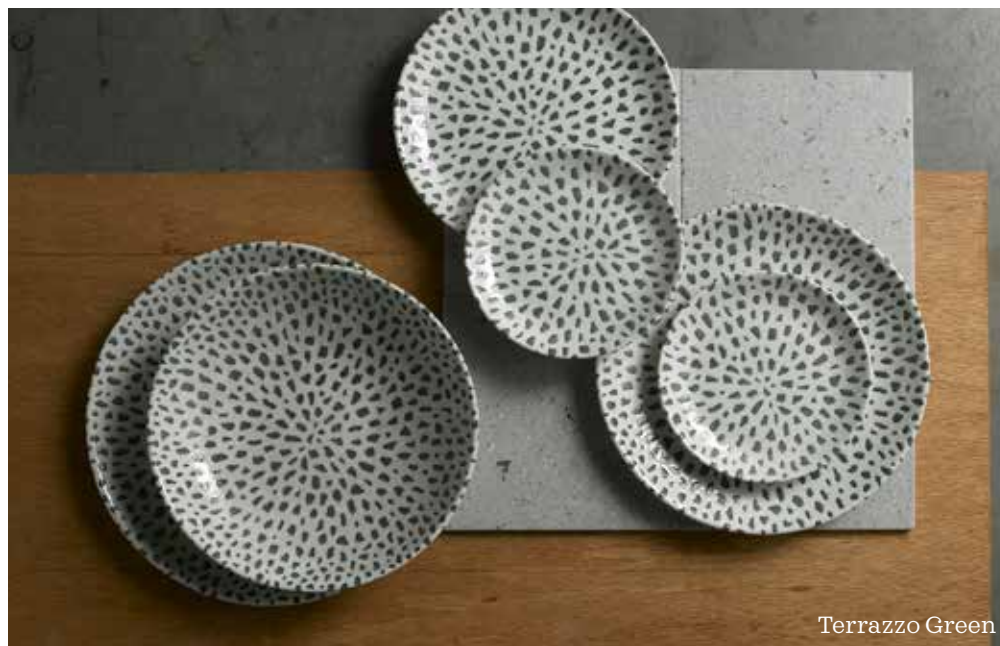
Terrazzo Blue



Terrazzo Blue

## Terrazzo

The conceptual, fragmented pattern is available in Green and Blue, adding a splash of retro revival colour to any tabletop. A colourful range, Terrazzo heightens the presentation of casual food styles, from street food to sharing plates and gastro bars.



Terrazzo Green



# Evo Origins

A simplistic reinvention

Evo Origins is a new range within the Evo collection. It has been designed to complement the original Dudson Evo range that is already established in the marketplace and popular with chefs worldwide.



## Evo Origins

Evo Origins is a range within the Evo collection. It has been designed to complement the original Dudson Evo range that is already established in the marketplace and popular with chefs worldwide.



# Evo

Character Established by Tradition

Handcrafted, Evo is supremely practical and whatever your particular service requirements, items can be mixed and matched to suit.



Evo Jet, Granite & Pearl



Evo Granite

## Evo

Evo has been designed with the appearance of hand-thrown pottery and its homely charm adds a touch of warmth to any tabletop. A replication of shape and aesthetics, Evo is available in three well established glaze colours, Granite, Jet and Pearl. The fully glazed pieces are hand dipped on Vitrified Stoneware and the reactive colours create variation, making each piece individual.



Evo Pearl

# Wood

Naturally Rustic

Dudson Wood serveware is exclusively designed to complement the ceramic portfolio.



# Wood




The acacia wood items feature a subtle surface texture to create a rustic effect. Dudson wood is food safe and specifically designed for the hospitality industry.



## The Maker's Collection



**Finca**  
A Creative Heritage

-  Flint  
Code: MCFF
-  Limestone  
Code: MCFL
-  Sandstone  
Code: MCFS

**Porto**  
Portuguese Craftsmanship

-  Blue  
Code: MCPB

**Jute**  
Hand-woven Crafted Technique

-  Grey  
Code: MCJG


**Urban**  
Industrial & Man-made Texture

-  Lamp Black  
Code: MCUB
-  Steel Grey  
Code: MCUG

## Harvest



**Grain**  
Natural & Earthy Texture

-  Speckled Green  
Code: HGGG

**Mediterranean**  
Rustic Coastal Charm

-  Terracotta  
Code: METE
-  Blue  
Code: MEIK

**Flux**  
Flowing Boarder Effects

-  Grey  
Code: FXGY

**Norse**  
Simple Rusticity

-  Grey  
Code: NOGY
-  Linen  
Code: NOLI
-  White  
Code: NOWH

## Harvest



**Harvest**  
Handcrafted and Authentic

-  Natural  
Code: HVNA
-  Linen  
Code: HVLIEV111
-  Ink  
Code: HVIN
-  Turquoise  
Code: HVTQ
-  Mustard  
Code: HVMU

-  Grey  
Code: HVGY
-  Plum  
Code: HVPL
-  Brown  
Code: HVBR
-  Grey  
Code: HVGR
-  Blue  
Code: HVBL



**White**  
Shape Crated Design

-  White  
Code: WHDU



**Terrazzo**  
Decorative and Abstract

-  Green  
Code: TZGR
-  Blue  
Code: TZBL



**Evo Origins**  
A simplistic reinvention

-  Fawn White  
Code: EOWH
-  Natural Grey  
Code: EOGY
-  Midnight Black  
Code: EOBK



**Evo**  
Character Established by Tradition

-  Granite  
Code: EVOG
-  Jet  
Code: EVOJ
-  Pearl  
Code: EVOP



**Wood**  
Naturally Rustic

-  Wood  
Code: ZDUW

# Technical features & benefits

The Maker's Collection | Harvest Grain | Harvest Flux | Harvest Norse | Harvest Mediterranean | Harvest | Evo Origins | Terrazzo | White



## HANDCRAFTED COLLECTION

Handcrafted collections, each piece is individual (identified with this symbol). Made in England and designed with industrial toughness. Every piece is individually glazed by hand leaving an original 'makers mark' on the reverse, highlighting the handcrafted nature.



## INDIVIDUALITY THROUGH PRINT

Printing creates individuality within each piece, as the light and dark colour tones may vary. Reactive prints create an individual texture and colour. Printed underglaze to create a protective layer for lasting durability and improved performance during service use.



## EDGE CHIP WARRANTY

Selected items are covered by a 5 year edge chip warranty. They are identified by this ★ symbol. Terms and conditions apply.



## SEMI-MATTE GLAZE

Featuring a semi-matte glaze.



## DURABILITY

All Dudson ceramics have a fully vitrified body which creates a 'closed' structure. The result of this is a very strong and durable product. Conforms to the British Standard BS 4034



## FULLY GLAZED BASE

Pin firing process. Fully glazed base prevents scratching when product is stacked.

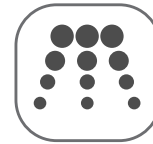


## STACKABLE

Engineered to stack = space saving in kitchens.



## MICROWAVE SAFE



## DISHWASHER SAFE

We use the toughest glazes in the business, so products withstand the harsh conditions of a professional kitchen. Conforms to the British Standard BS 12875 p5



## BRITISH STANDARDS

Dudson products meet the quality standards laid down by the British Standards Institute.

- BS 4034 Vitrified Hotelware
- BS 12875 Dishwasher Resistance



## MADE IN ENGLAND

Using the Dudson finest vitrified ceramic body.





# Technical features & benefits

---

## Evo

### Vitrified Stoneware



#### HANDCRAFTED COLLECTION

A handcrafted collection, each piece is individual. Every piece is individually glazed by hand leaving an original 'makers mark', highlighting the handcrafted nature.



#### EDGE CHIP WARRANTY

Selected items covered by a 2 year edge chip warranty. They are identified by this ★ symbol. Terms and conditions apply.



#### DURABILITY

All Dudson ceramics have a fully vitrified body which creates a 'closed' structure. The result of this is a very strong and durable product. **Conforms to the British Standard BS 4034**



#### STACKABLE

Engineered to stack = space saving in kitchens.



#### MICROWAVE SAFE



#### DISHWASHER SAFE

Conforms to the British Standard BS 12875 p5

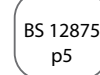
\*Aesthetic matte glazes can be prone to further matting and metal marks



#### BRITISH STANDARDS




Dudson products meet the quality standards laid down by the British Standards Institute.

- BS 4034 Vitrified Hotelware
- BS 12875 Dishwasher Resistance





dudson.com

 dudson1800  dudson1800  Dudson1800

**Tel: +44 (0) 1782 577 566**

**Fax: +44 (0) 1782 524 355**

**Email: [info@dudson.com](mailto:info@dudson.com)**

**HEAD OFFICE & STOKE SHOWROOM**

Churchill China (UK) Ltd  
No. 1 Marlborough Way  
Tunstall  
Stoke-on-Trent  
ST6 5NZ

**BERLIN SHOWROOM**

Rankestraße 8  
10789  
Berlin  
Germany

**LONDON SHOWROOM**

Churchill China (UK) Ltd  
Business Design Centre  
Suite 102  
52 Upper Street  
Islington  
London  
N1 0QH

**MADRID SHOWROOM**

Calle Princesa No 2  
7ta Planta  
Puertas 4 y 5  
Madrid 28008  
España  
Tel: 910 004 929



**DUDSON** is a registered trademark of Churchill China PLC (Since April 2019)